

EDGE-R-RITE® II



**Operator's Manual
Maintenance Manual
Parts List**

**TURFCO®
EDGE-R-RITE® II
Edger**

Product Number 85304

Starting Serial Number J00101

Also Includes Information On

Standard Blade

Product Number 87104

And

Optional Blades and Blade Assemblies

Product Numbers 87105, 87106, 87107, 87108 and 87111

Manual Number 664313 Revision A



DANGER - IF INCORRECTLY USED THIS MACHINE CAN CAUSE SEVERE INJURY. THOSE WHO USE AND MAINTAIN THIS MACHINE SHOULD BE TRAINED IN ITS PROPER USE, WARNED OF ITS DANGERS, AND SHOULD READ THE ENTIRE MANUAL BEFORE ATTEMPTING TO SET-UP, OPERATE OR SERVICE THE MACHINE.

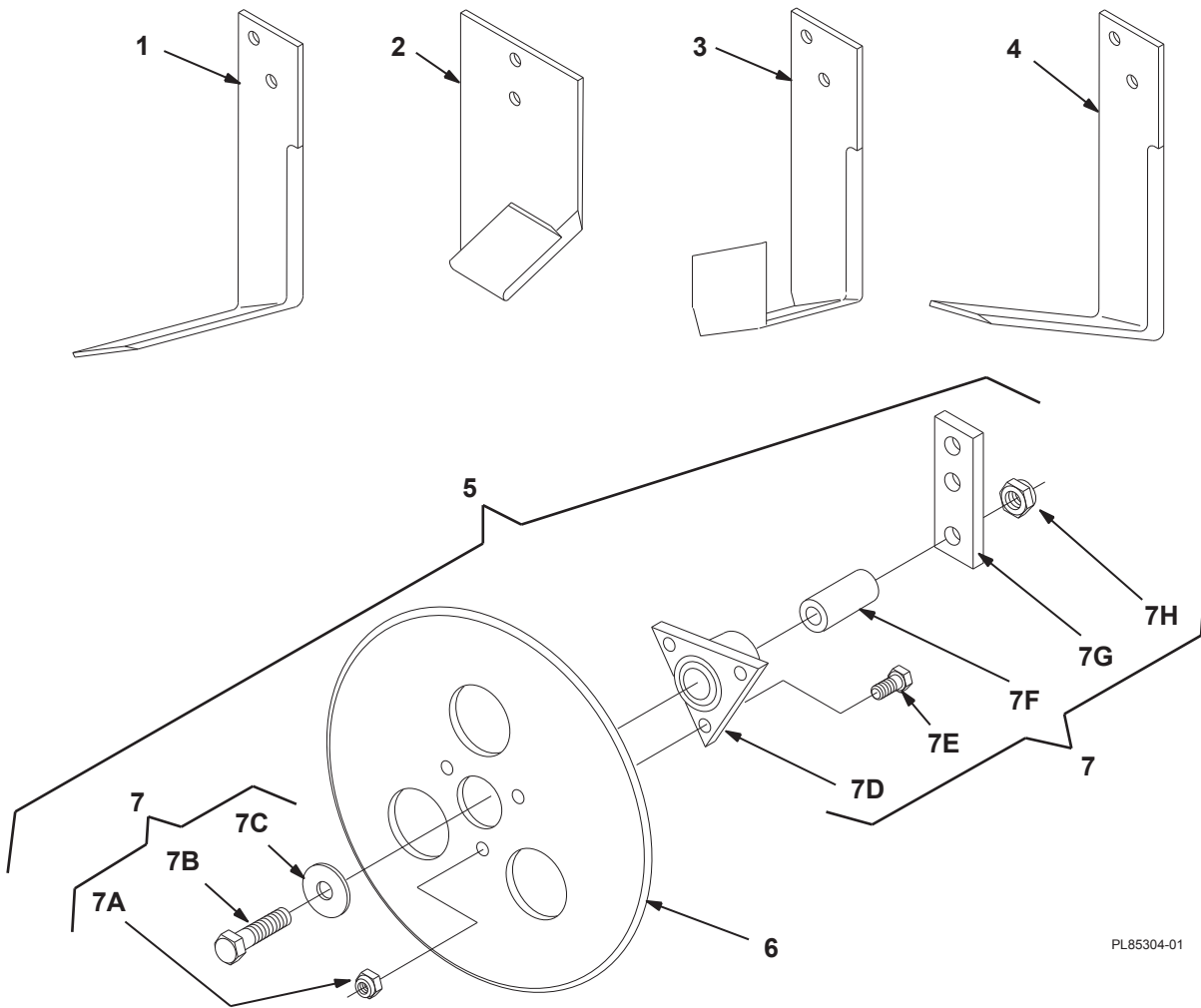
TURFCO MFG., INC.

1655 101st. Avenue NE • Minneapolis, MN 55449-4420 USA

Phone (763) 785-1000 • FAX (763) 785-0556

2007 Turfco Mfg., Inc.

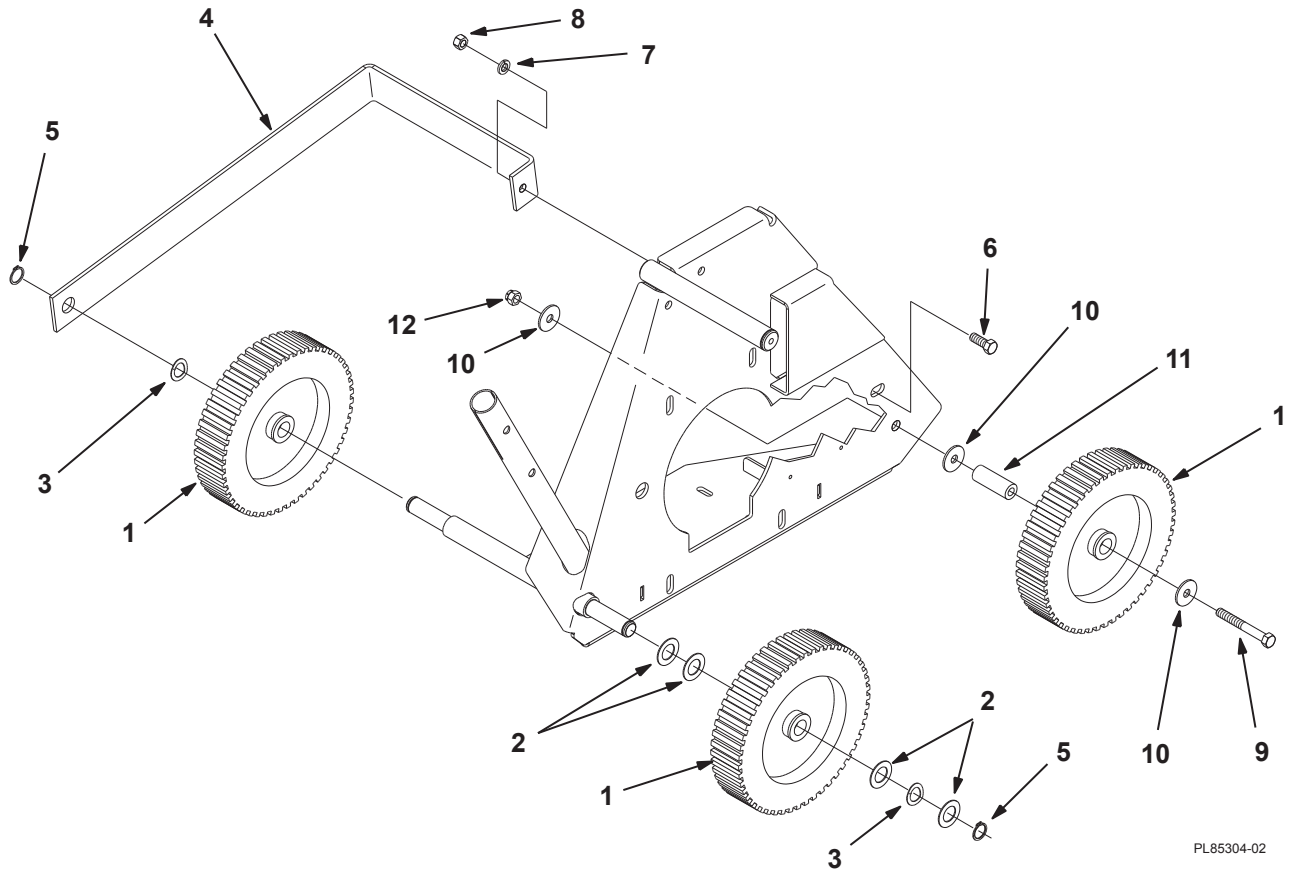
Blades



PL85304-01

Item No.	Part No.	Description	Qty.
1	87104	Blade, Right Angle	1
2	87105	Blade, V	1
3	87106	Blade, Stripper	1
4	87111	Blade, Tree Ring	1
5	87110	Blade Circular, Includes Circular Blade and Circular Blade Mounting Kit	1
6	87107	Blade, Circular (Blade Only, Does Not Include Hub or Mounting Kit).....	1
7	87108	Bracket and Hub Assembly, Circular Blade Includes Items 7A thru 7H (Does Not Include Circular Blade).....	1
7A	444830	Nut, Hex, 1/4"-20 Nylock	3
7B	400308	Screw, Hex, 3/8"-24 x 2-1/4"	1
7C	499059	Washer, 25/64" ID x 1-1/4" OD x 3/32" Thick.....	1
7D	655407	Hub, Includes Oilite Bearings	1
7E	400106	Screw, Hex, 1/4"-20 x 5/8"	3
7F	655411	Bushing, Circular Blade	1
7G	655406	Bar, Mounting	1
7H	444812	Nut, Hex, 3/8"-24 Nylock	1

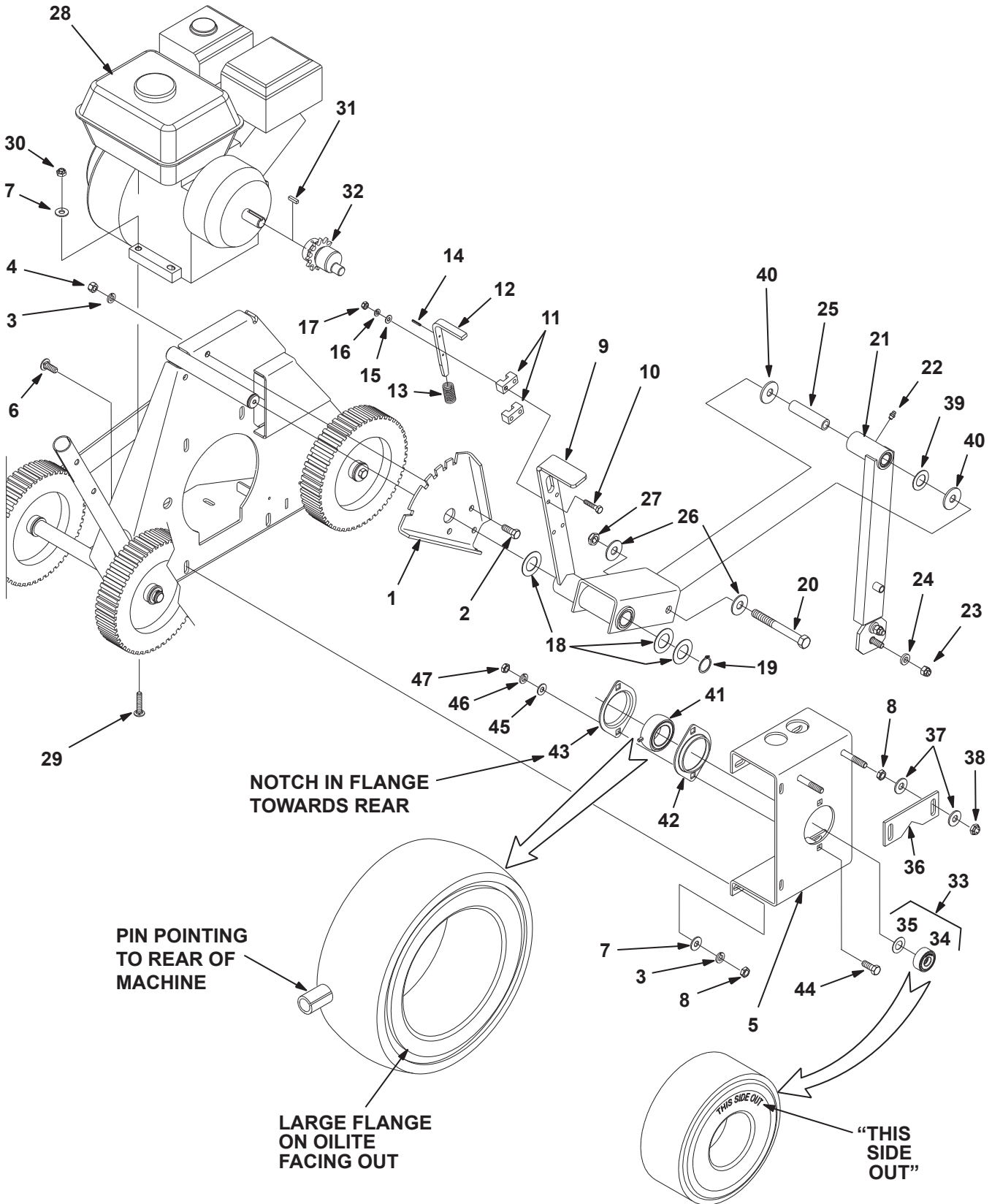
Wheels and Bumper



PL85304-02

Item No.	Part No.	Description	Qty.
1	655431	Wheel and Tire, 8" x 1-3/4"	3
2	499074	Washer, Flat, 49/64" ID x 1-5/16" OD x 3/64" Thick	4
3	499492	Washer, Curved Spring 3/4" ID x 1-1/8" OD x .021 Thick	2
4	655369	Bumper	1
5	458013	Ring, Retaining, 3/4"	2
6	400298	Screw, Hex Head, 3/8"-24 X 1	1
7	446142	Washer, Lock, 3/8"	1
8	443112	Nut, Hex, 3/8"-24.....	1
9	400312	Screw, Hex Head, 3/8"-24 x 3".....	1
10	499059	Washer, Flat, 25/64" ID x 1-1/4" OD x 3/32" Thick	3
11	655427	Spindle	1
12	444812	Nut, Hex, 3/8"-24, Nylock.....	1

Blade Depth Adjuster, Cutting Arm and Engine

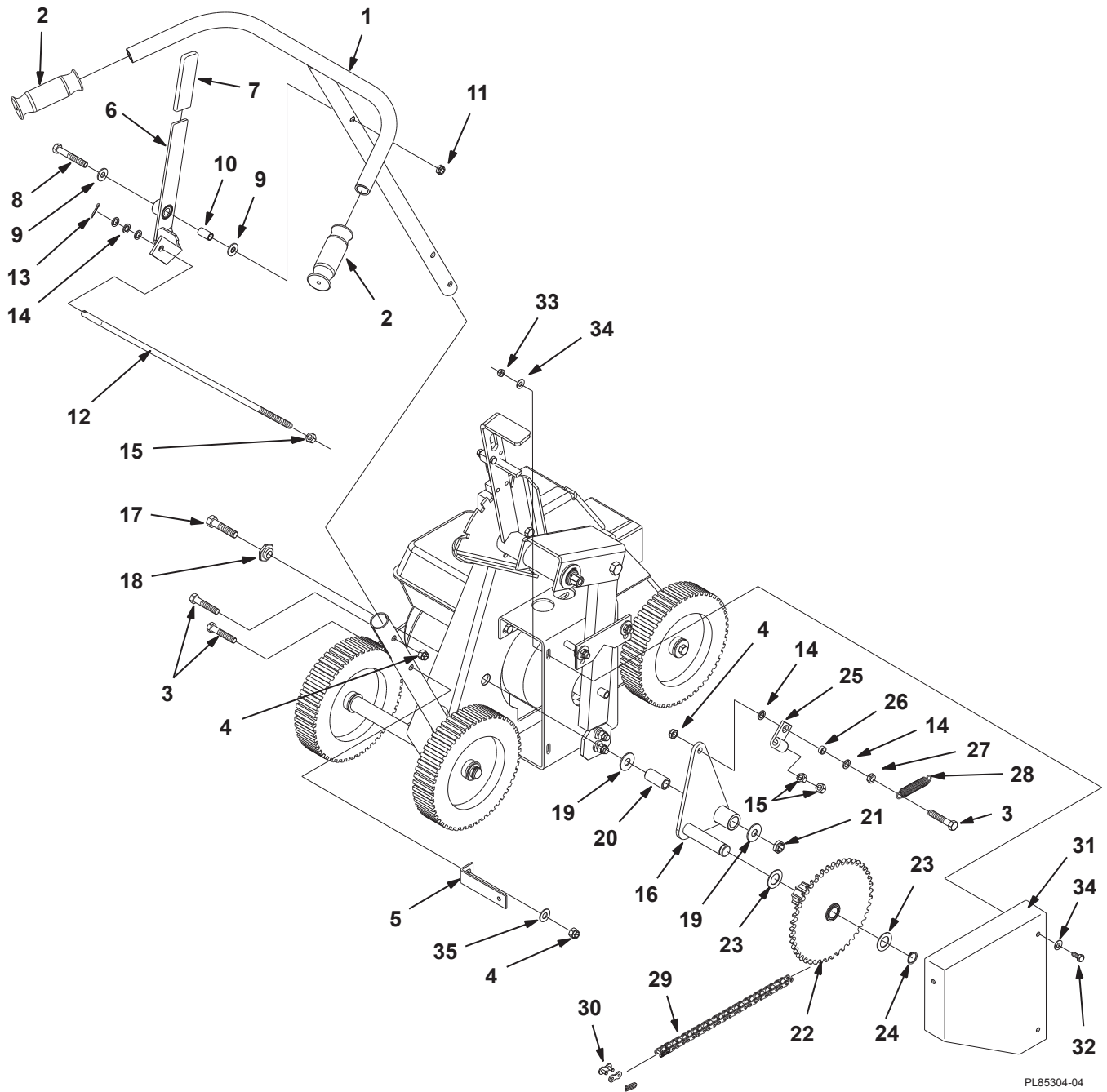


PL85304-03

Blade Depth Adjuster, Cutting Arm and Engine

Item No.	Part No.	Description	Qty.
1	655387	Catch Plate.....	1
2	400298	Screw, Hex Head, 3/8"-24 x 1".....	3
3	446142	Washer, Lock, 3/8".....	7
4	443112	Nut, Hex, 3/8"-24.....	3
5	664296	Support Bracket.....	1
6	440118	Bolt, Carriage, 3/8"-16 x 1".....	4
7	452006	Washer, Flat, 3/8" ID x 7/8" OD x 5/64" Thick.....	8
8	443110	Nut, Hex, 3/8"-16.....	6
9	655388	Handle Assembly, Lifting.....	1
10	400152	Screw, Hex Head, 1/4"-28 x 1-1/4".....	4
11	655393	Guide, Trigger.....	2
12	655394	Trigger.....	1
13	651381	Spring, Trigger.....	1
14	461359	Pin, Spring, 1/8" x 3/4".....	1
15	452002	Washer, Flat, 1/4" ID x 5/16" OD x 3/64" Thick.....	4
16	446128	Washer, Lock, 1/4".....	4
17	443104	Nut, Hex, 1/4"-28.....	4
18	499128	Washer, Flat, 1-1/64" ID x 1-3/4" OD x 3/64" Thick.....	3
19	458021	Ring, Retaining, 1".....	1
20	400458	Screw, Hex Head, 1/2"-20 x 4-1/2".....	1
21	662711	Cutting Arm Weldment, Includes Grease Fitting, Blade Attaching Nuts and Washers.....	1
22	471214	Grease Fitting, 1/4"-28 Straight.....	1
23	444812	Nut, Hex, 3/8"-24 Nylock.....	2
24	499167	Washer, Flat, 25/64" ID x 3/4" OD x 9/64" Thick.....	2
25	650859	Bushing, Cutting Arm.....	1
26	452010	Washer, Flat, 1/2" ID x 1-1/4" OD x 5/64" Thick.....	2
27	499035	Nut, Hex, 1/2"-20, Nylock.....	1
28	662723	Engine, 4.0 HP Honda.....	1
29	658599	Bolt, Carriage, 5/16"-18 x 1-1/2".....	4
30	444808	Nut, Hex, 5/16"-18, Nylock.....	4
31	662956	Key, Square, 3/16" x 1/2".....	1
32	662818	Eccentric Weldment.....	1
33	664202	Bearing Assembly, Eccentric Includes Bearing, Thrust Washer and Loctite (Install Bearing With "This Side Out" Towards the Cutting Arm.....	1
34	664203	Bearing, Eccentric (Bearing Only) (Install With "This Side Out" Towards the Cutting Arm.....	1
35	664204	Washer, Thrust, 5/8" ID x 1-1/8" OD x 1/32" Thick (Washer Only).....	1
36	655404	Guide, Cutting Arm.....	1
37	452008	Washer, Flat, 7/16" ID x 1" OD x 5/64" Thick.....	4
38	499357	Nut, Hex, 3/8"-16 Nylock.....	2
39	499074	Washer, Flat, 49/64" ID x 1-5/16" OD x 3/64" Thick.....	1
40	499436	Washer, Flat, 17/32" ID x 1-3/4" OD x 5/64" Thick.....	2
41	664306	Bushing, Oilite Assembly, (Install With Large Flange Facing Out Towards the Cutting Arm).....	1
42	664297	Flange, Bearing.....	1
43	664311	Flange, Bearing, Modified (Install With Notch In Flange Towards Rear).....	1
44	400186	Screw, Hex Head, 5/16"-18 x 7/8".....	2
45	452004	Washer, Flat, 5/16" ID x 3/4" OD x 1/16" Thick.....	2
46	446134	Washer, Lock, 5/16".....	2
47	443106	Nut, Hex, 5/16"-18.....	2

Handlebar and Traction Drive

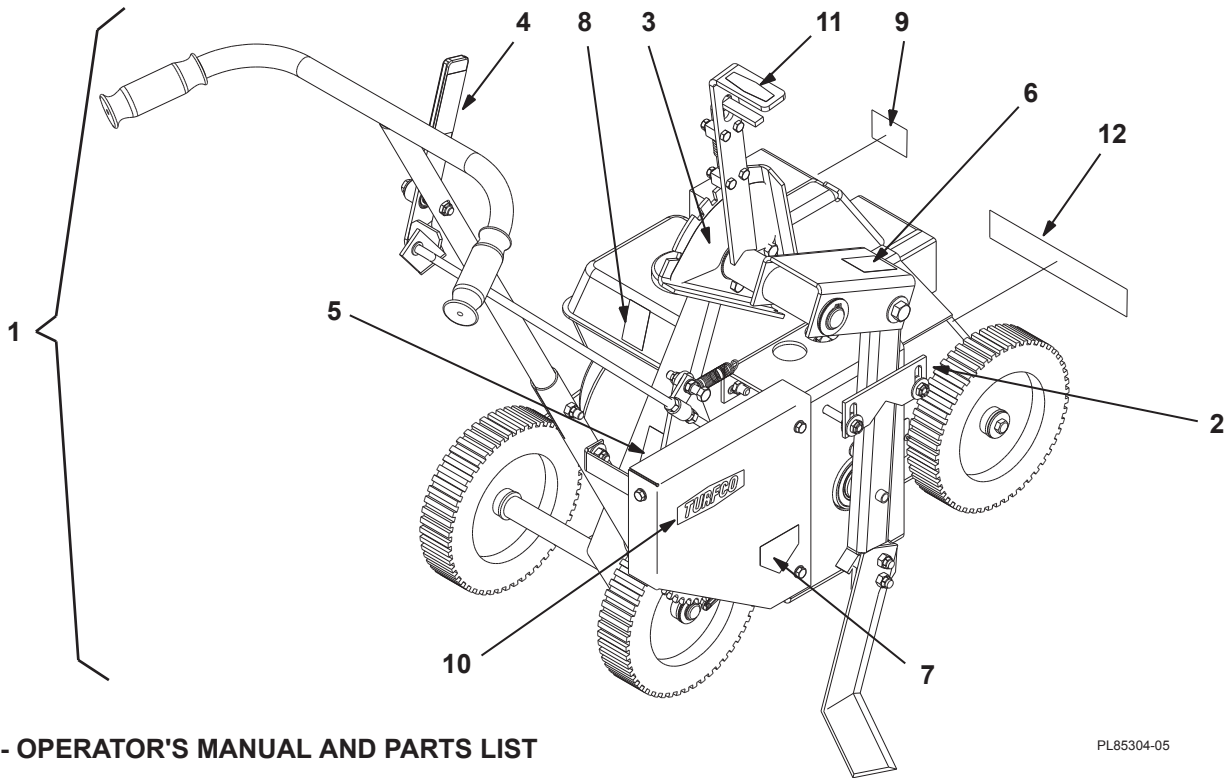


PL85304-04

Handlebar and Traction Drive

Item No.	Part No.	Description	Qty.
1	655418	Handlebar Weldment	1
2	659274	Handgrip.....	2
3	400306	Screw, Hex Head, 3/8"-24 x 2"	3
4	444812	Nut, Hex, 3/8"-24, Nylock	3
5	655416	Mounting Bracket, Guard	1
6	656771	Handle Assembly, Control	1
7	657208	Grip, Handle, Rectangular.....	1
8	400310	Screw, Hex Head, 3/8"-24 x 2-1/2"	1
9	452006	Washer, Flat, 3/8" ID x 7/8" OD x 5/64" Thick	2
10	651065	Bushing	1
11	444760	Nut, Hex, 3/8-24 Nylock	1
12	655425	Control Rod, Clutch.....	1
13	460014	Pin, Cotter, 3/32" x 3/4"	1
14	499021	Washer, Flat, 25/64" ID x 5/8" OD x 1/16" Thick	5
15	443112	Nut, Hex, 3/8"-24	3
16	664308	Clutch Weldment.....	1
17	400450	Screw, Hex Head, 1/2"-20 x 2-1/2"	1
18	650467	Bushing, Blade Angle Adjustment	1
19	452010	Washer, Flat, 1/2" ID x 1-1/4" OD x 5/64" Thick	2
20	664291	Bushing, Pivot	1
21	499035	Nut, Hex, 1/2-20, Nylock	1
22	665175	Sprocket Assembly, Drive	1
23	499074	Washer, Flat, 49/64" ID x 1-5/16" OD x 3/64" Thick	2
24	458013	Ring, Retaining, 3/4"	1
25	650783	Fitting, Pivot	1
26	650790	Bushing, Spacer, 1/2" OD x 3/8" ID.....	1
27	443812	Nut, Hex, 3/8-24	1
28	650635	Spring, Extension, 9/16" OD	1
29	655399	Chain, RC-41 x 62 Pitches.....	1
30	650604	Link, Master, RC-41	1
31	662722	Weldment, Guard	1
32	400106	Screw, Hex Head, 1/4"-20 x 5/8"	3
33	444830	Nut, Hex, 1/4"-20, Nylock	3
34	452002	Washer, Flat, 1/4" ID x 5/16" OD x 3/64" Thick	6
35	452008	Washer, Flat, 7/16" ID x 1" OD x 5/64" Thick	1

Decals

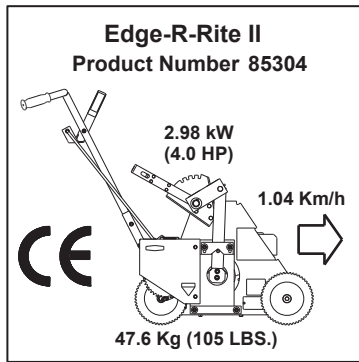


13 - OPERATOR'S MANUAL AND PARTS LIST

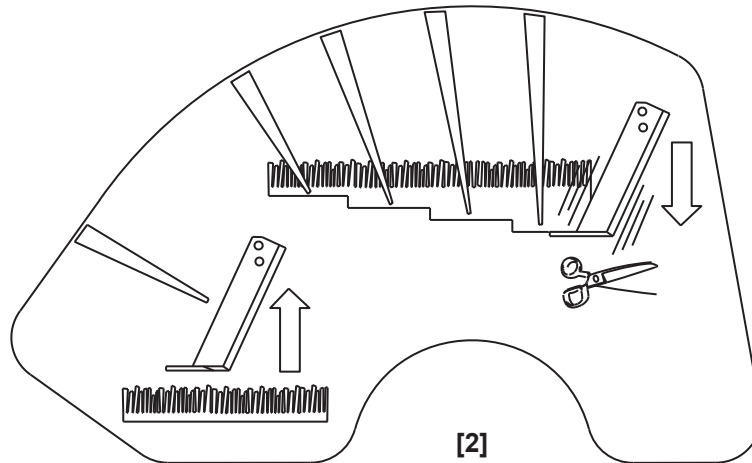
PL85304-05

Item No.	Part No.	Description	Qty.
1	662726	Decal Set, Includes Items 2 Thru 12	1
2		Decal, EDGE-R-RITE II Product Identification.....	1
3		Decal, Depth Settings.....	1
4		Decal, Traction Clutch	1
5		Decal, Maximum Angle of Operation Warning.....	1
6		Decal, Read Manual Warning.....	1
7		Decal, Foot Hazard Warning	1
8		Decal, Hearing Protection Hazard Warning.....	1
9		Decal, Fuel Level Warning.....	1
10		Decal, TURFCO Logo, Large	1
11		Decal, TURFCO Logo, Small	1
12		Decal, EDGE-R-RITE II Logo	1
13	664313	Manual, Operator's and Parts Lists, Rev A Edge-R-Rite II (Starting Serial No. J00101)	1

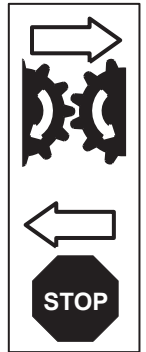
Decals



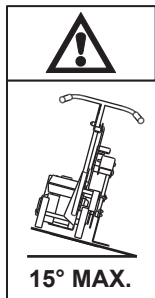
[1]



[2]



[3]



[4]



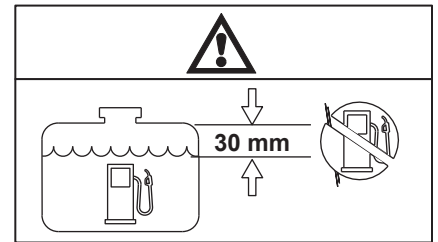
[5]



[6]



[7]



[8]

PL85304-06

- [1] - EDGE-R-RITE® II PRODUCT IDENTIFICATION DECAL
- [2] - BLADE DEPTH SETTINGS DECAL
- [3] - TRACTION DRIVE CLUTCH LEVER DECAL
- [4] - MAXIMUM ANGLE OF OPERATION DECAL

- [5] - READ MANUAL WARNING DECAL
- [6] - FOOT HAZARD WARNING DECAL
- [7] - HEARING PROTECTION HAZARD WARNING DECAL
- [8] - PROPER FUEL LEVEL WARNING DECAL

Set Screw Torque Settings

SET SCREW DIAMETER (INCHES)	HEX WRENCH FLAT (INCHES)	TORQUE (INCH-POUNDS)	TORQUE (FOOT-POUNDS)	TORQUE (Nm)
.190" (#10)	3/32"	27	2.2	3.1
1/4"	1/8"	63	5.2	7.1
5/16"	5/32"	120	10	13.5
3/8"	3/16"	214	17.8	24.2
7/16"	7/32"	324	27	36.6
1/2"	1/4"	464	38.7	52.4
5/8"	5/16"	994	82.8	112.3



TURFCO MFG. INC.
1655 101st. Avenue NE
Minneapolis, Minnesota USA 55449-4420

Phone (763) 785-1000 FAX (763) 785-0556
E-Mail - service@turfco.com Internet - turfco.com